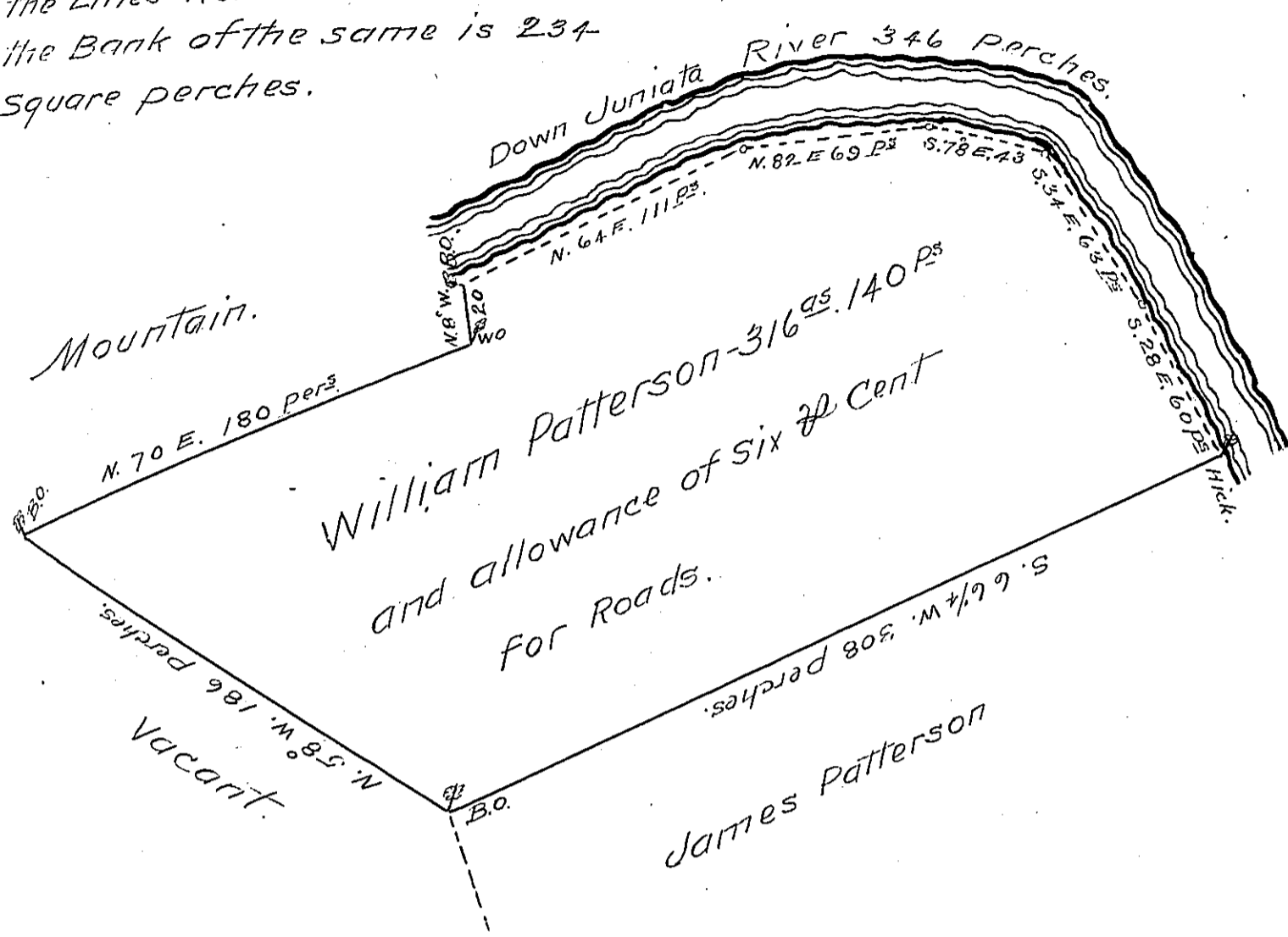


FORM NO. 1.

The Quantity of Land contained between the Lines Run next the River and the Bank of the same is 234 Square perches.



A Draught of a Tract of Land Situate in Leck Township in Cumberland County Containing Three Hundred and Sixteen acres and one Hundred and forty perches and the usual allowance of Six 1/2 Cent for Roads; Surveyed for William Patterson June 3<sup>rd</sup>. 1763 in pursuance of a Warrant from the Honourable the Proprietaries Bearing Date the Fifth day of Feb. 1755.

To John Lukens }  
Surveyor General } John Armstrong D.S.

IN TESTIMONY that the above is a copy of the original remaining on file in the Department of Internal Affairs of Pennsylvania, made conformably to an Act of Assembly approved the 16th day of February, 1833, I have hereunto set my Hand and caused the Seal of said Department to be affixed at Harrisburg, this Fifteenth day of March 1906.

*Isaac D. Brown*  
Secretary of Internal Affairs.